

. Construction . Contracting . Creativity . Innovation



COMPANY PROFILE



WWW.K2CONTRACTING.NET

Contents

<i>About us</i>	2
<i>Philosophy</i>	4
<i>Clients</i>	4
<i>Organisational Chart</i>	5
<i>List of Manpower</i>	6
<i>Our Services</i>	7
<i>Project Photos</i>	8
<i>Ongoing Projects</i>	17
<i>Completed Projects</i>	18
<i>Contact Us</i>	19



Welcome to our company

K2 Contracting was established in 2021 in State of Qatar as 100% locally owned medium size organization registered as a Limited Liability Company (LLC) under the law of State of Qatar. K2 deals with Government Departments and consultants with regard to the construction of pipe line projects for potable water mains, drainage, sewerage and treated sewage effluent (TSE). K2 is also offering following services.

- a. Piping
 - i. Water Pipeline Service*
 - ii. Drainage pipeline service**
- b. Road Work & Maintenance
 - i. Interlock*
 - ii. Kerb stones*
 - iii. Sub base*
 - iv. Asphalt**
- c. Building Construction & Maintenance
 - i. Villa/Buildings**
- d. Landscaping*
- e. Civil Work Maintenance*

K2 water and drainage division offers the experience of working on Water and Drainage works in the State of Qatar for the last twelve years and successfully completed various projects in this time span,

As an Associated Pipe Line Contractor, it became actively involved in all phases of the pipeline construction industry on a nationwide basis. K2 Water and Drainage division was involved in the construction of pipe lines and completed over 500 kilometres of pipeline installation. K2 has successfully completed pipelines from 100 mm to 1600 mm diameter.

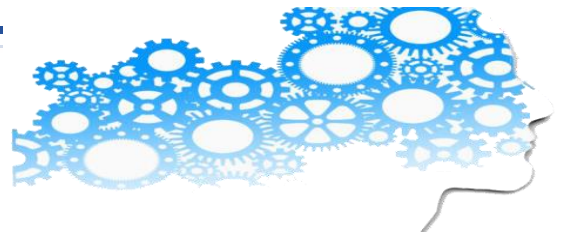
Each of our divisions has the expertise to conduct successful operations in every

climatic condition of the region and contributes to achieve K2's eminence reputation in the pipeline construction industry.

Our personnel are responsible, experienced individuals who work closely with the client to provide cost effective, high quality construction projects.

K2 is equipped to work with the client in obtaining necessary permits and complying with their terms during construction. Cooperation is a key to successfully working with ever changing regulatory agencies and rulings.

1. PHILOSOPHY PROJECT



Our Philosophy is highlighted by the following guiding ideals.

- *To deliver the highest standards in our services by treating both customers and employees with outmost respect and trust.*
- *To supply quality material for the utmost satisfaction on our customers.*
- *To create innovative solutions in our operations and utilize best of advanced technology to achieve our goals.*
- *To give decision-making authority to the company's key personnel and leadership*
- *In order to pursue and manage any project, all the way from the concept through to the implementation.*
- *To create a successful and sustainable business that meets the aspirations of all stakeholders.*
- *To creates reputation for reliability and excellence in the contracting and construction industries.*
- *To be recognized for our positive engagement with the development of various aspects of the construction industry Qatar.*
- *To grow the scope of our business by developing our human resources, maintaining strict business ethics and adopting best breed technology and equipment.*
-

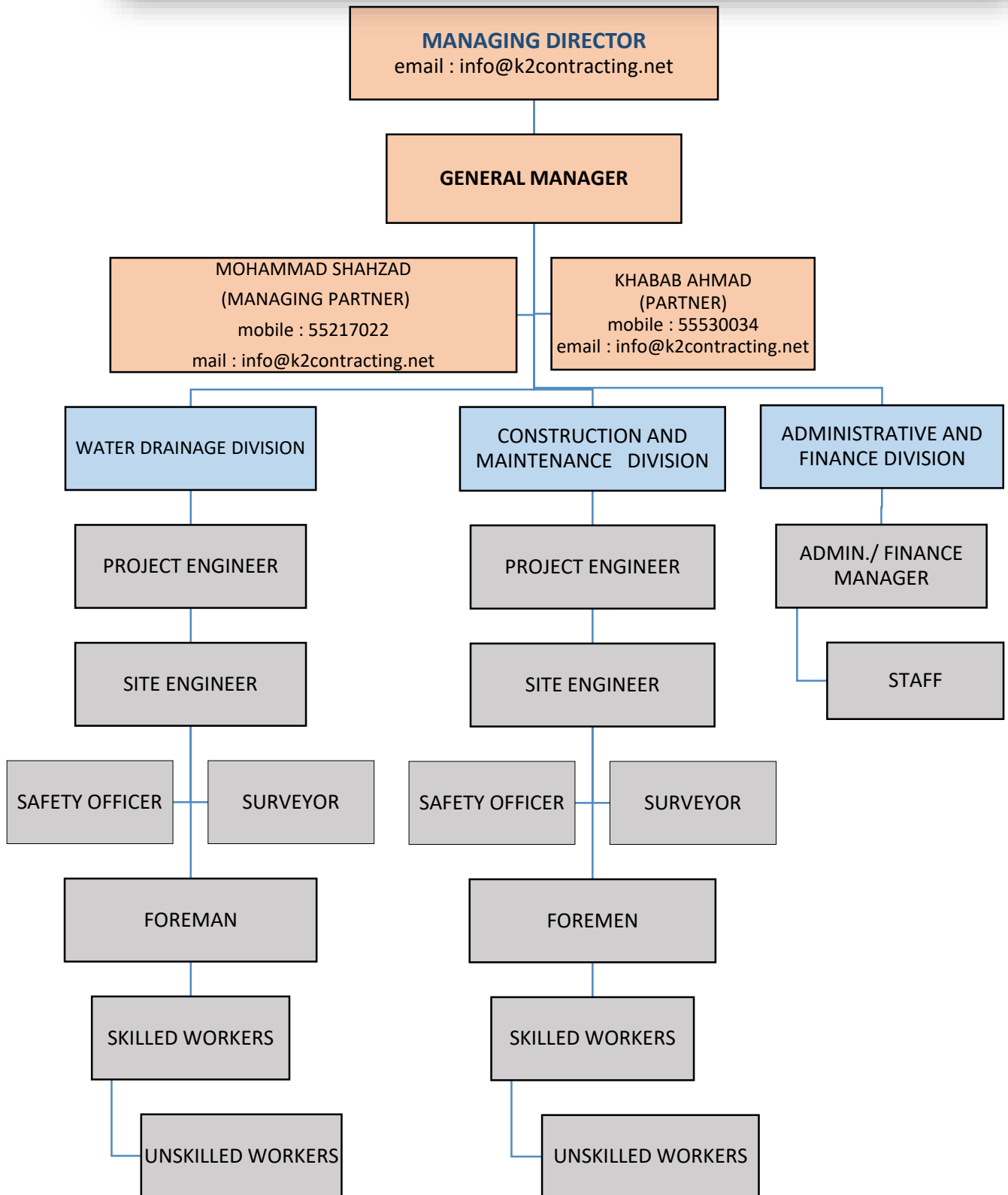
2.

CLIENTS



- *We have always placed the highest premium on customer satisfaction through the quality of work that is maintained at every stage of our work and service. Part of our philosophy is that we endeavour to try and understand the needs and wishes our clients. We understand that our client needs quality services which are cost efficient. We also know that our client often has very challenging schedules.*
- *Our clients list reads like a variable who's who of Qatar's contracting and trading companies. Many major international and local companies and government ministries are now in touch with K2 Contracting for their different construction requirements and needs.*

3. ORGANIZATIONAL CHART





4. List of Manpower

<i>S/N</i>		<i>No.</i>
<i>1</i>	<i>Project Engineer</i>	<i>2</i>
<i>2</i>	<i>Site Engineer</i>	<i>3</i>
<i>3</i>	<i>Safety Officer</i>	<i>1</i>
<i>4</i>	<i>Surveyor</i>	<i>1</i>
<i>5</i>	<i>Foreman</i>	<i>4</i>
<i>6</i>	<i>Pipe Fitters</i>	<i>24</i>
<i>7</i>	<i>Heavy Equipment Operators</i>	<i>4</i>
<i>8</i>	<i>Electrician</i>	<i>2</i>
<i>9</i>	<i>Mechanic</i>	<i>2</i>
<i>10</i>	<i>Plumber</i>	<i>2</i>
<i>11</i>	<i>Carpenters</i>	<i>4</i>
<i>12</i>	<i>Steel Fixers</i>	<i>4</i>
<i>13</i>	<i>Mason / Tile fixers</i>	<i>5</i>
<i>14</i>	<i>Painters</i>	<i>2</i>
<i>15</i>	<i>Driver</i>	<i>3</i>
<i>16</i>	<i>Labourers</i>	<i>34</i>

OUR SERVICES

5. Services

a. Piping

- i. *Water Pipeline Service: - Our specialized engineers and staff expert in DI Pipe Wrapping, DI Pipe laying and fittings, Joint-wrapping, Testing, swabbing, sterilization, flushing. Cut and connect to existing pipes 100 mm dia upto 1600 mm dia pipe. We do all jobs as per kehramma specifications being an approved kehramma contractor.*
- ii. *Drainage pipeline service: - We are specialized in DI Pipe, GRP, HDPE, Wrapping, DI Pipe laying and fittings, Joint-wrapping, Testing, flushing and cut and connect to existing pipes with different sizes and approved Ashghal contractor and follows guidelines of Ashghal.*

b. Road Work & Maintenance

- i. *Interlock*
- ii. *Kerb stones*
- iii. *Sub base*
- iv. *Asphalt*

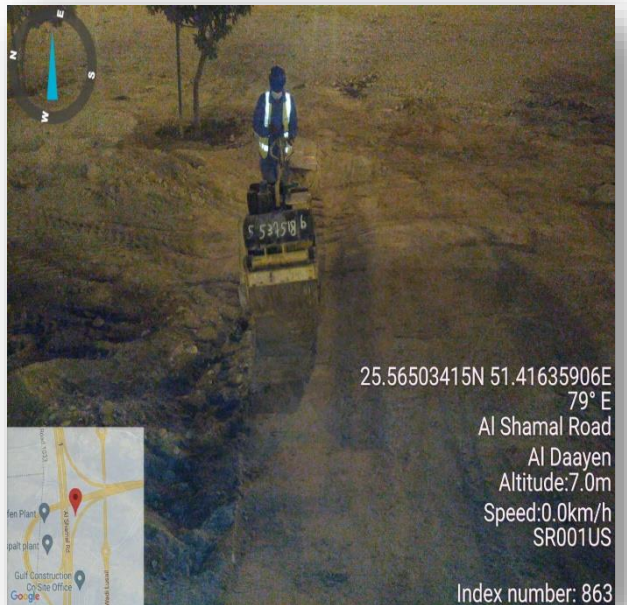
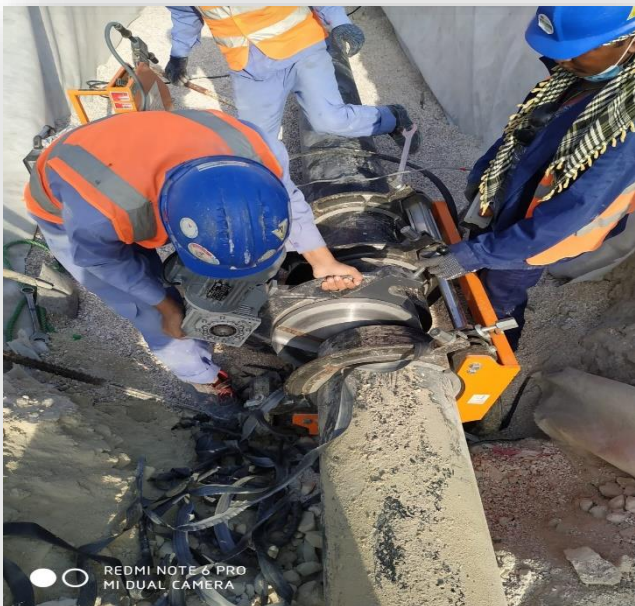
c. *Building Construction & Maintenance (Building/Villa)*

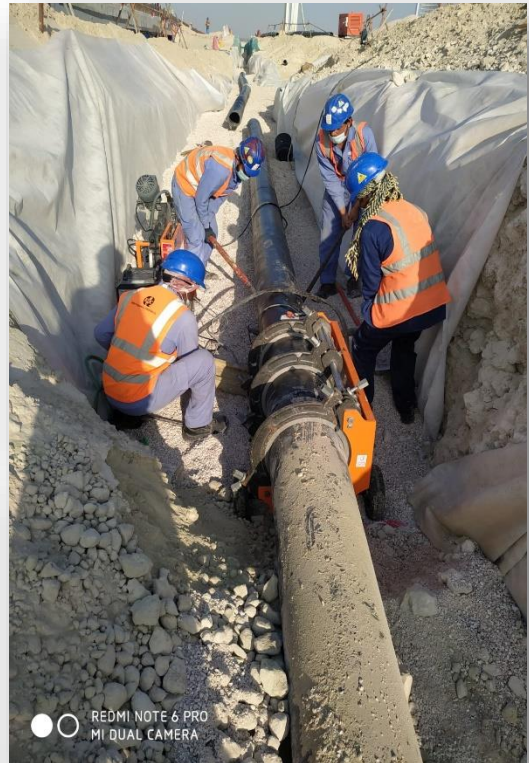
d. *Landscaping*

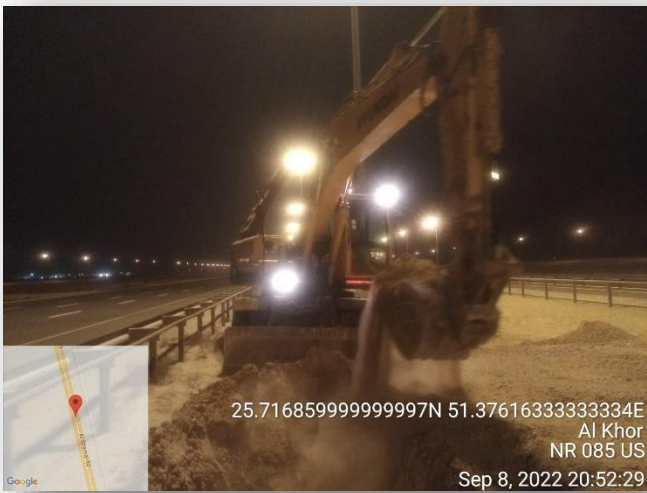
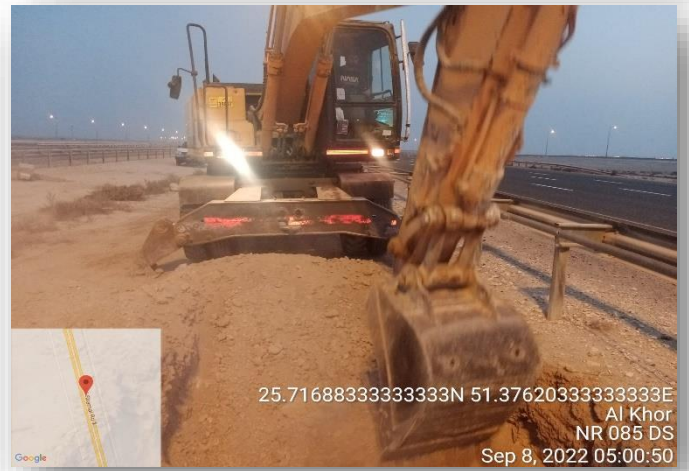
e. *Civil Work Maintenance*

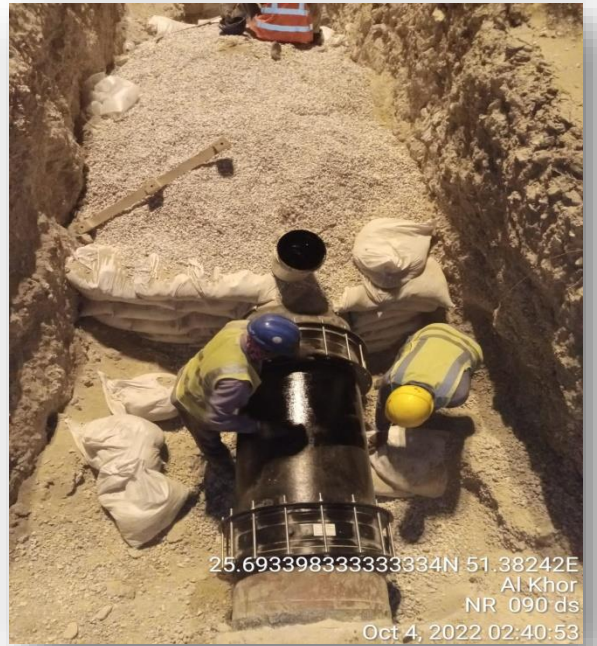
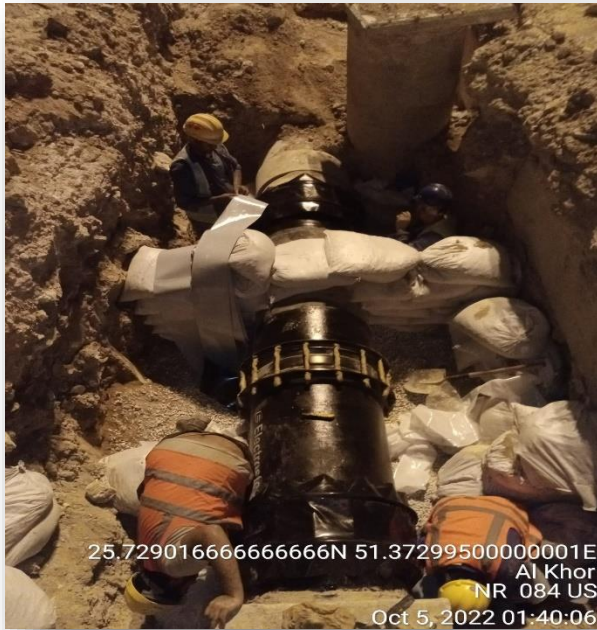
PROJECTS

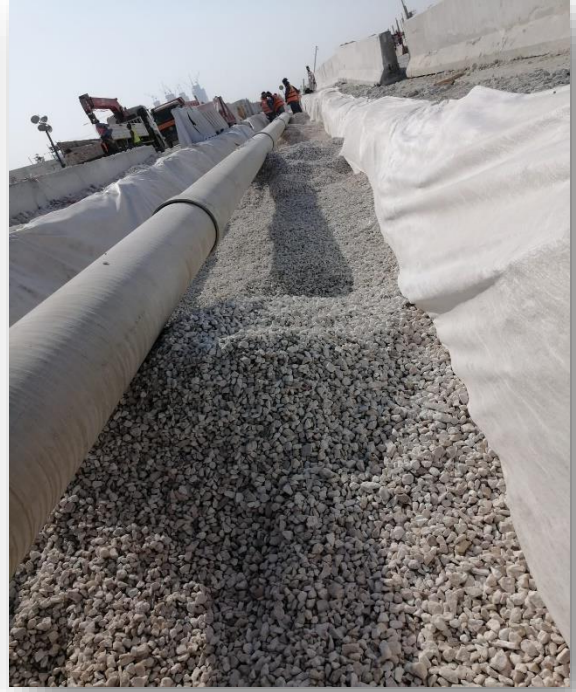
6. Projects Photos



















7.

Ongoing Projects



S/N	Project	Client/ Consultant	Main Contractor	Scope
1	<i>Qetaifan Island North Phase-1, Package 4 (QIN4)</i>	<i>Qetaifan Projects</i>	<i>CCC/ TCC Jv.</i>	<i>Installation, Testing and Commissioning and Handing Over of the Storm Water and Foul Sewer Pipe (GRP)</i>
2	<i>Qetaifan Island North Phase-1, Package 4 (QIN4)</i>	<i>Qetaifan Projects</i>	<i>CCC/ TCC Jv.</i>	<i>Installation of TSE Chamber fittings</i>
3	<i>C299 - Road & Infrastructure in Doha Industrial Area -Package 3</i>	<i>Ashghal</i>	<i>Qatar Building Co.</i>	<i>Potable Water House Connection works</i>
4	<i>Road and Infrastructure in Al Mearad & Southwest Mauaither</i>	<i>Ashghal</i>	<i>Marbu Contracting</i>	<i>Potable Water House Connection works</i>
5	<i>Qetaifan Island North Phase-1, Package 4 (QIN4)</i>	<i>Qetaifan Projects</i>	<i>CCC/ TCC Jv.</i>	<i>Supply of HDPE welders</i>
6	<i>Road & Infrastructure Works in South of Al Meshaf Package-09 QS049</i>	<i>Ashghal</i>	<i>DCR - QBEC Jv.</i>	<i>DI & HDPE Joint Works</i>
7	<i>Road & Infrastructure Works in South of Al Meshaf Package-09 QS049</i>	<i>Ashghal</i>	<i>DCR - QBEC Jv.</i>	<i>Water House Connection</i>
8	<i>Road & Infrastructure in Al Ebb and Lebaib - Package 04 (DN099-P04)</i>	<i>Ashghal</i>	<i>QBS Construction</i>	<i>Installation of Sewage House Connection</i>

8.



<i>S/N</i>	<i>Project</i>	<i>Client/ Consultant</i>	<i>Main Contractor</i>	<i>Scope</i>
1	<i>Road & Infrastructure in Al Sailiya and Al Atiya Housing/Army Camp Road - C304-DW080</i>	<i>ITALCONSULT</i>	<i>Qatar Building Co.</i>	<i>Installation of Sewerage House Connection</i>
2	<i>Qetaifan Island North Phase-1, Package 4 (QIN4)</i>	<i>Qetaifan Projects</i>	<i>CCC/TCC Jv.</i>	<i>D) Pipe cutting</i>
3	<i>C-319 R/W Park and Ride & Non-Stadium Bus Infrastructure - Package 2</i>	<i>Ashghal</i>	<i>Qatar Building Co.</i>	<i>Installation of Kerb stone & Interlock tiles</i>
4	<i>North Road Project</i>	<i>Ashghal</i>	<i>Power Waste Management</i>	<i>Rehabilitation works</i>
5	<i>C-311 Road & Infrastructure in Doha, Industrial Area - Package 7</i>	<i>Ashghal</i>	<i>Qatar Building Co.</i>	<i>Installation of Interlock Tiles</i>



Contact Us



*Al Rufaa Tower Building
No: 54, Street No: 830,
Zone No: 17, Al meena street
Old Salata, Doha, Qatar.
Post box: 32367*



+974 44133735



info@k2contracting.net



www.k2contracting.net